

Leigh & Orange Ltd.

SPECIALITY PROJECTS

SPECIALITY PROJECTS

LEIGH & ORANGE LTD
Integrity | Humanity | Creativity | Sustainability

Leigh & Orange

www.leighorange.com

All rights reserved. No part of this publication may be reproduced, transmitted or stored in any form or by any means, electronic or mechanical, without the permission in writing from L&O Ltd.



HSBC Building Tseung Kwan O & TVB New TV City, Tseung Kwan O, Hong Kong



French Mission, Central, Hong Kong, 1917

SPECIAL BUILDINGS - HISTORY The history of Leigh & Orange (L&O) in the design of special buildings, with unique project functional requirements, dates back to 1901 when the Ohel Leah Synagogue this Robinson Road, Hong Kong, was built. It heralded a period of interesting colonial and heritage projects including Marble Hall, the residence for Sir Paul Chater on Conduit Road – a building subsequently donated to the Hong Kong Government and that eventually became Admiral House. L&O also designed and built St. Andrew's Church in Kowloon together with Sir Paul in 1904.

Throughout Hong Kong's colonial era, L&O was involved in projects of great architectural significance. Subsequently, L&O was commissioned to work on Loke Yew Hall at the University of Hong Kong, the French Mission Building, British Military Hospital and, most recently, the regeneration of Woodside House. In the 1970s, rapid growth in Hong Kong's population meant greater demand for more recreational space. With the idea of bringing in live animals and thrill rides, L&O created the animal displays and rides for the Ocean Park theme park. L&O's expertise in theme park design helped bring another major theme park to Hong Kong's Lantau Island at the start of the 21st century.

L&O has progressed to designing buildings that satisfy both technological and environmental needs. Led by the vision to develop humane and sustainable architecture for today, L&O has completed a range of award-winning projects, including Hong Kong Science Park Phase II, HSBC Building Tseung Kwan O and the Polar Adventure attraction at Ocean Park.

01 - TECHNOLOGY
02 - THEME PARKS
03 - HERITAGE



1. Hong Kong Science Park Phase 2, Hong Kong
2. HSBC Building Tseung Kwan O, Kong Kong
3. Kadoorie Biological Sciences Building, Hong Kong University, Hong Kong
4. Telephone Exchange Building, Tai Po, Hong Kong

01

TECHNOLOGY Buildings that embrace technology have a unique purpose and the architectural elements that shape their identity are self-manifesting of that purpose. L&O has pioneered exemplars that fulfil unique briefs, including energy centres, laboratories, broadcast studios and data centres. With an understanding that technology is rooted in the past and cultivated in the future, L&O embraces technology in its design philosophy and delivery process, as much as the practice explores new technologies to enrich its mindset for new client projects.



Science Park Phase 2 development is designed to accommodate for applied research and development facilities. It contains eight high-tech buildings comprising two Energy Towers and six R&D office buildings (four of which are combined provisions for laboratory facilities) and is set in a park-like campus environment for the enjoyment of both tenants and public alike.

The overall site and individual buildings are served by an energy-saving district cooling system, creating a sustainable environment capitalising on a seafront location. Highly adaptable buildings with energy-efficient features are carefully placed in a landscaped setting to maximise sea views. The design encourages and sustains social interaction amongst park users and provides a much cherished public open space in urban Hong Kong. L&O's services included master planning, architectural design, interior design and project leadership in the multi-disciplinary consultant team.

Awards : 2013 HKIA Cross-Strait Architectural Design Awards (Nominated Award)
 2008 Quality Building Award (Merit Award - Sustainability)
 2008 Quality Building Award (Merit Award - Non-Residential)
 2008 HKIE & IStructE Joint Structural Division Special Award
 2008 PGBC Green Building Award (New Construction) Finalist
 2008 HKIA Annual Award (Commercial Building) Shortlisted Project (Laboratory Buildings)
 2007 HKIA Annual Award (Commercial Building) Shortlisted Project
 2007 MIPIM Asia Award (Green Building) Finalist

Completion : 2007
Client : Hong Kong Science & Technology Parks Corporation



02 DATA NETWORK CENTRE

Tseung Kwan O, Hong Kong

Dense forests of bamboo inspired the boldly patterned façade of this data network centre, located on an industrial estate in Hong Kong's New Territories.

Created using vertical strips of bright green, yellow and grey aluminium panels, the abstract composition provides a distinctive and cohesive design to override the irregular arrangement of windows on the building.

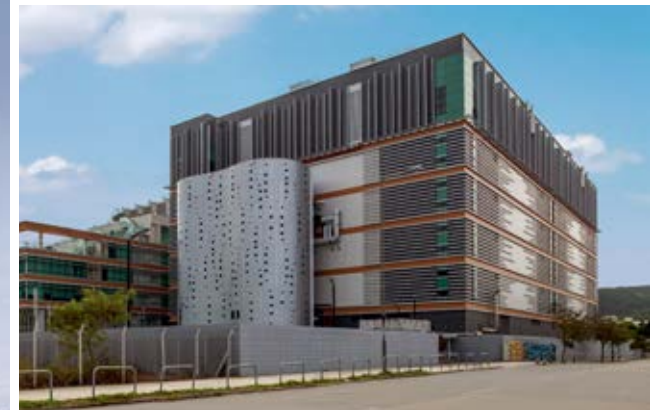
The five-storey building includes three floors of data centre provision for the telecommunications client including an operations centre and a cable landing station for trans-Pacific submarine cables. As well as handling the client's

own data, the facility operates as a co-location environment for its own telecommunication clients.

Completion : 2014
Client : Confidential

The design of the data centre therefore needed to present an attractive environment to potential clients in addition to providing high-performance technical areas, which exceeded the Uptime Institute Tier III classification for data centres.

The facility achieved the LEED Gold standard for green buildings.



03 NTT COMMUNICATIONS HK FINANCIAL DATA CENTRE TOWER 2 (FDC2) Tseung Kwan O, Hong Kong

Designed for NTT Communications, a major co-location operator with worldwide operations, this expansion project of 32,600sqm GFA provides double the existing data hall capacity on the site. This Tier 4-ready project boasts 13,200sqm of high specification data hall spread over 4 floors. In a first for a data centre in Hong Kong, security of operation is enhanced by the provision of extensive chilled water storage in two large silos which are located prominently at one end of the new building.

The facility achieved the LEED Platinum standard for green buildings.

Awards :
2015 Autodesk Hong Kong BIM Awards - Honorable Mention

Completion : 2015
Client : NTT Communications



04 HSBC BUILDING
TSEUNG KWAN O
Tseung Kwan O, Hong Kong



L&O was commissioned by the Hong Kong and Shanghai Banking Corporation Limited to design a data centre on a 4.8-hectare site of flat, reclaimed land with an industrial estate in Tseung Kwan O. The 47,128sqm data centre comprises three buildings, one to four storeys tall, on a site of about 50,000sqm that includes ancillary support offices and a three-storey data centre that is designed to comply with Uptime Institute Tier IV requirements. The complex provides 9,200sqm of raised floor equipment room and 7,000sqm of office space.

The datacentre has achieved a Hong Kong BEAM Gold rating in recognition of the project's environmentally responsible design.

Awards :

2011 FuturArc Green Leadership Award Citation (Commercial Architecture)
 2010 Green Building Award (Merit Award - New Building, Commercial Project)
 2010 Quality Building Award (HK Non-Residential) Certificate of Finalist
 2009 The HKIA Annual Award Shortlisted Project

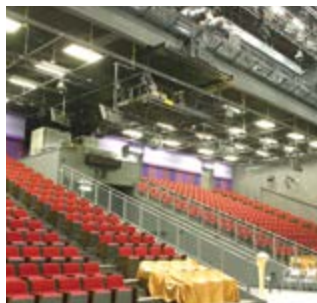
Completion : 2008

Client : Hong Kong and Shanghai Banking Corporation Ltd.



05 TVB NEW TV CITY

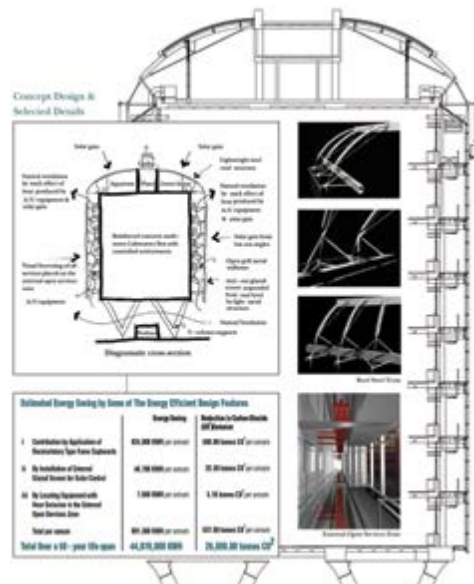
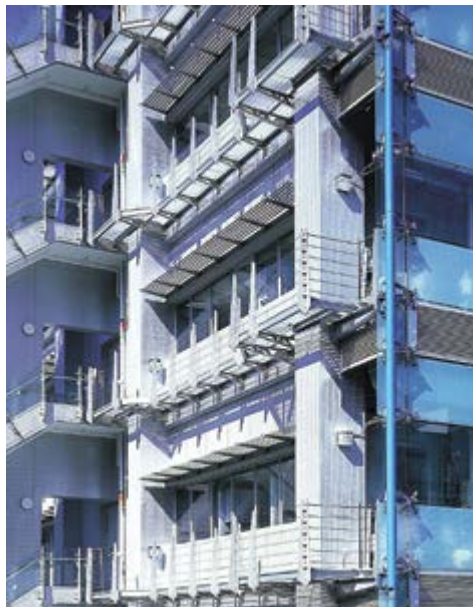
Tseung Kwan O, Hong Kong



Designed to accommodate the entire operation of Hong Kong's major television station on a greenfield site, the development has 15 studios, extensive outdoor sets and state-of-the-art production, post-production and broadcast facilities.

Completion : 2003
Client : Television Broadcasts Ltd.

(This project is a collaboration work between L&O and Gensler.)



06 KADOORIE BIOLOGICAL SCIENCES BUILDING

The University of Hong Kong, Hong Kong

Awards : 2001 Winner for the Asian Region in World Architecture Awards
2000 The HKIA Certificate of Merits

Completion : 1999
Client : The University of Hong Kong

Designed primarily for research but with some teaching capability, this internationally award-winning building brings together the existing but formerly dispersed departments of Zoology, Botany, Ecology and Biodiversity and the University's Institute of Molecular biology into one centre.

With ten storeys in height, this highly innovative building, not only answers the demanding architectural challenge of the site but, through its response to the issues of functionality, flexibility, safety, energy efficiency, sustainability, lifetime economy, buildability and ease of maintenance, set new standards for the design of research laboratories worldwide.



07 HKJC RACECOURSE COMPUTER CENTRE

Shatin, Hong Kong

A state-of-the-art facility that accommodates the club's central tote, off-course and telephone betting systems in a computer room as large as the space centre computer at NASA. An insulated panel system was developed for the project Leibert, where air-handling units deliver stringent environmental control to the club's digital main frame systems. Sophisticated entry & security systems, box-in-box construction with watertight bulkhead doors are some of special features incorporated.

Completion : 1986
Client : The Hong Kong Jockey Club



10 SWITCHING CENTRE

Po Hing Centre, Kowloon Bay, Hong Kong

Switching centre for a mobile telephone company.

Completion : 1999
Client : Mandarin Communications Ltd.



08 METRO BROADCASTING CORPORATION

Hung Hum, Hong Kong

Radio studios, with office, accounts department, sales and reception spaces.

Completion : 1991
Client : Metro Broadcast



11 HUTCHISON SECOND GLOBAL CROSSING SWITCHING CENTRE

Chaiwan, Hong Kong

A technical fit-out for a major telecommunications company, requiring high standards of design and environmental control.

Completion : 2000
Client : Hutchison Telephone



09 NATIONAL BROADCASTING CORPORATION

Chai Wan, Hong Kong

Production studios and associated support facilities to accommodate NBC 24-hour Asia News Business channel. The project was completed on schedule and within budget on a fast-track arrangement.

Completion : 1995
Client : National Broadcasting Corporation Co Ltd.



12 MOBILE TELEPHONE SWITCHING CENTER

Kwai Chung, Hong Kong

Capitalising on L&O's experience in technical fit-outs, the client required a facility suited to the latest needs of the telecommunications market.

Completion : 2000
Client : Hutchison Telecommunications Ltd.



1. Ocean Park Summit, Hong Kong
2. Polar Adventure, Ocean Park Summit, Hong Kong
3. Cable Car, Ocean Park, Hong Kong

02

THEME PARKS Delivering theme park projects demands working collaboratively with experts and specialists on distinctly different buildings projects. This is a unique offering from L&O, a long-term partner of regional and international theme park developers.

Since the establishment of Hong Kong's Ocean Park in the 1970s, L&O has been continuously involved in the development, rejuvenation and expansion of theme park attractions that meet client and public expectations in delivering high-quality facilities and rides that thrill visitors.



13 OCEAN PARK

Aberdeen, Hong Kong

An entertainment and educational theme park situated on the headland overlooking the South China Sea with a variety of rides, aquaria, aquatic auditoria, marine and themed exhibits and restaurants. The sites are connected by a cable car and escalator networks.

Completion : 1976
Client : Ocean Park Corporation

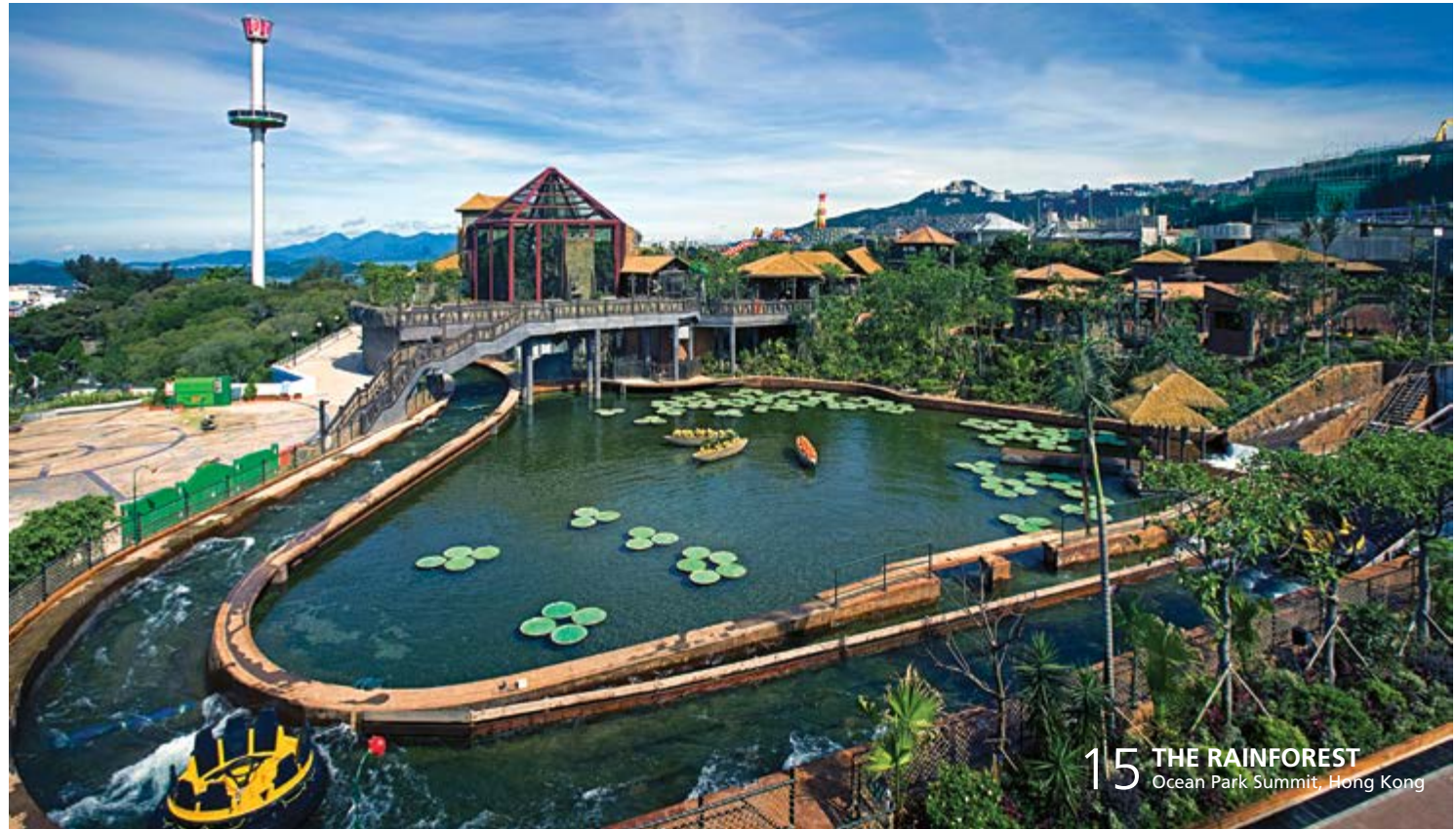


14 WATER PARK

Ocean Park, Hong Kong

An expansion to Asia's largest water park presented new attractions including inner tube rides, lazy river rides and a giant slide.

Completion : 1989
Client : Ocean Park Corporation



15 THE RAINFOREST

Ocean Park Summit, Hong Kong



The Rainforest offers an adventure for the guests to explore the elements of the wildlife and their habitats. The primary activities include rainforest exhibit experience, river rafting and a discovery trail. The major attractions comprise a forest box which houses rainforest animals and bird habitats in its exotic setting.

In a 3-minute raft ride, the guests would experience the power of river currents in the midst of the changing rainforest landscape and a glimpse of rainforest life form which co-exist with human in the allocation of natural resources.

The design concept maximises the experience of the natural rainforest and hence increases the connection of guests to the natural world of rainforest, both physically and in perception. In a true sense, the guest experience is both a form of entertainment as well as an educational appreciation.

Awards : 2013 International Property Awards (Asia Pacific) – Highly Commended Leisure Architecture Hong Kong
2011 Cityscape Award - Architecture in the Emerging Markets (Tourism, Travel & Transport – Built Award category) Shortlisted Project

Completion : 2011
Client : Ocean Park Corporation



16 **THRILL MOUNTAIN**
Ocean Park Summit, Hong Kong



Thrill Mountain offers a dynamic, high-energy, adrenaline rush for park guests seeking a little “kick”. The land is imagined as a contemporary boardwalk – borrowing the eclectic mix of unique food and variety of ride experiences once found in classic, seaside resorts, updated and re-imagined by adding a layer of popular youth culture.

Thrill Mountain creates a space for guests to challenge each other for “high scores” on their favourite interactive games, work up the courage to experience the rush of the “front car” on the hyper-coaster and share a quick snack with special friends – reflecting the spirit, exhilaration and energy of urban youth while creating special memories for a new generation of guests.

Awards : 2013 International Property Awards (Asia Pacific) – Highly Commended Leisure Architecture Hong Kong
2012 MIPIM Asia – Special Jury Award

Completion : 2011
Client : Ocean Park Corporation



17 POLAR ADVENTURE
Ocean Park Summit, Hong Kong



To create an immersive, thrilling and educational encounter with animals and habitats of the Polar Regions for the Ocean Park visitor, Polar Adventure includes exhibits replicating the natural environments of both the North and the South Pole. Not only seeing the animals of the polar regions but also being exposed to the temperatures and daily struggles of researchers working in these areas will give the guest a sense of wonder and awe of these frozen lands.

While guests will be introduced to the many magnificent creatures of the Poles, for example, penguins, belugas, seals and walrus, they will also experience the things that make this region so difficult to live and work in, cold temperatures, ice, snow and the rugged terrain. It is hoped that the guest will develop a better understanding of these habitats and the environmental threats facing them as well as having an exciting and fun time.

Awards : 2013 International Property Awards (Asia Pacific) – Highly Commended Leisure Architecture Hong Kong
2012 MIPIM Asia – Special Jury Award

Completion : 2012
Client : Ocean Park Corporation



18 LETSRUN PARK

Yeongcheon, Korea

The LetsRun Park Yeongcheon creates a unique destination that brings together the excitement and thrills of modern theme parks together with the passion and traditions of thoroughbred horse racing thus marrying together the entertainment cultures of today with a classical sport that goes back in history for several centuries.

The aim is to create a complex which appeals to both adults and children alike foster a greater understanding between horses and people, is educational, and provides a venue which families can safely have fun, enjoy nature and help to promote thoroughbred horse racing in a more enlightened and holistic setting and environment.

Our approach was to take the long-term view and ensure that the Korea Racing Authority has a facility that it can still be proud of in 50 years' time.

Our design creates the stage on which both the racecourse and the theme park and their supporting facilities can flourish and operate in harmony to not only entertain and educate but to help to develop a horse culture among the people of Korea.

Award : 2016 International Competition for Horse Park in Yeongcheon, Korea - Honourable Mention

Date : 2016
Client : Korea Racing Authority



Dong Dai He theme park is located on a 9.8sqkm site in Suizhong, a northern city of mainland China along Bohai Sea. It is designed to create a sustainable tourism city by connecting the Past to the Present, Living Space to Touristic Sites, New Development and Heritage Conservation. Our goal is to breathe lives to this new economic zone of Dongdaihe by injecting tourism attractions to activate the local economy.

“The Garden under the Great Wall” is the backbone concept of this project. Emphasising on both habitability and tourism, a landmark “grand ski park” has been introduced at the heart of the master plan, this active spine of all-year-round attractions connects both community space and touristic activities.

19 THEME PARK IN DONG DAI HE

Liaoning, China

Date : Confidential
Client : Beijing Prosperity Energytec Company Limited



1. Kardoorie Pavilion, Hong Kong
2. St. John's Building, Central, Kong Kong
3. St. Andrew's Church, Hong Kong
4. Sandridge Bay, Port Melbourne, Australia

03

HERITAGE L&O's buildings seek to embrace the communities which they serve. In turn, these communities embrace the buildings and over time come to consider them as part of their heritage. With nearly 140 years of designing behind it, many of L&O's buildings have survived the passing of the years and are now cherished and carefully preserved for their heritage value. Restoring and rejuvenating such historic environments is also part of the service that L&O offers to the community.

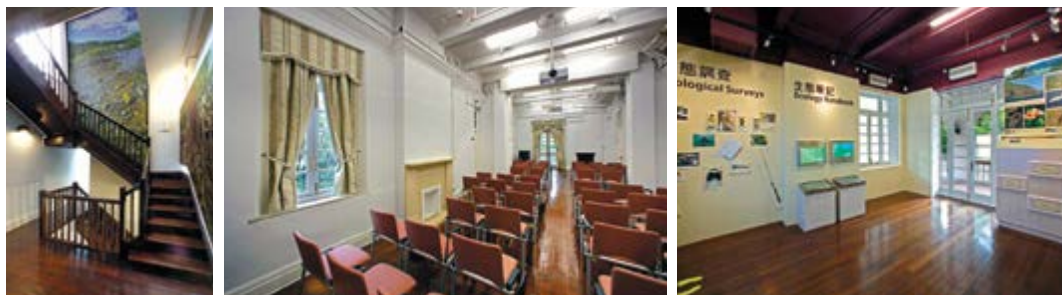


St. Joseph's Church, Fanling is a Parish church built in the 1950s and has been serving the community for over five decades. In 2009, the Church saw an opportunity to expand its facilities onto the immediately adjacent parking lot so as to increase church services for the community. L&O was selected as the concept architect preparing a master plan and assisting the Church to acquire the adjoining land from the Government. After the successful acquisition, L&O was retained to act as Architect for the realization of the project. The new extension to St. Joseph's Church includes a new multi-purpose auditorium, community services centre, activities rooms and priest quarters.

The original St. Joseph's Church is the only remaining building of its type in the Luen Wo Hui Area. It is a religious hub for locals and a prominent landmark. The existing church building has been identified as a potential Grade III Historical Building. Heritage conservation is, therefore, one of the most important considerations in the design. This is not only a design mechanism to achieve a sustainable development, but also a means to continue to celebrate the legacy of this local spiritual community for the generations to come.

Completion : 2022 (Anticipated)
Client : The Catholic Diocese of Hong Kong - Diocesan Building & Development Commission

20 EXTENSION TO ST. JOSEPH'S CHURCH Fanling, Hong Kong



This is a restoration and conservation project for the Woodside residence, originally built as one of the staff quarters for Butterfield & Swire. The building silently stands at the hill slope overlooking Quarry Bay and is the only remaining block of its group. Surrounded by a lush natural landscape, the building survived the war occupation and underwent several ownership transactions before landing into the list of government properties. The project converts the residence into a Biodiversity Education Centre managed by the Agriculture, Fisheries and Conservation Department. The verandahs as a key architectural feature are re-constructed, and considerable efforts are exerted to re-build the external fabric using modular bricks that are no longer available in Hong Kong. Inside the timber staircase and structure are strengthened but the character preserved, and a new lift tower is added to facilitate universal access. A new skylight is added at the



21 WOODSIDE BIODIVERSITY EDUCATION CENTRE

Quarry Bay, Hong Kong

heart of the building that introduces quality daylight into the interior space. Finishing materials are preserved and new materials are carefully selected to re-create the storyline of Woodside.

Awards : 2014 Architectural Services Department Annual Awards - Merit Award

Completion : 2011
Client : Architectural Services Department, Agriculture, Fisheries and Conservation Department



22 FORMER BRITISH MILITARY HOSPITAL

Borrett Road, Hong Kong

The British Military Hospital at 10-12 Borrett Road was a hospital in Hong Kong for the use of the British garrison. It is currently a Grade II listed historic building. The hospital was built in 1901, with an arcaded brick exterior and high ceilings. The building was saved for preservation and L&O was commissioned by the Hong Kong government as the architect to restore the building's exterior, re-roofing and lead-reparation works.

Completion : 2004
Client : Architectural Services Department



23 LOKE YEW HALL

The University of Hong Kong,
Pokfulam Road, Hong Kong

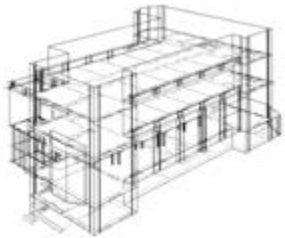
Built in 1912, the neoclassical Main Building incorporating Loke Yew Hall is the founding building of the University of Hong Kong.

Designed by L&O, the Building is an imposing institutional structure built to last. It is spacious, well-proportioned, supported by granite colonnades in the Renaissance style, and surmounted by a tall tower and four turrets, with a great hall and four internal courtyards, two of which have palm trees over 9m tall. The original design of the building

provided for a large extension, which was carried out in 1952 in the original style and an extra floor was added in 1958, funded by the grants from the Government.

The building is now a preserved historical building and the exterior is one of the declared monuments in Hong Kong.

Completion : 1912
Client : The University of
Hong Kong



24 HELENA MAY

Central, Hong Kong

The Helena May was completed in 1916. The building, in the style of late Victorian-Edwardian Classical Revival, was originally used as a hostel with living quarters, a library, a reading room and classrooms for single women from Europe.

The exterior of the Main Building was declared a heritage building by Hong Kong's Antiquities and Monuments Office in 1993. L&O was commissioned as the architect for the refurbishment of this five-storey building. The renovation provided additional restaurant and entertainment facilities, and was completed in 2000.

Completion : 1916 to 2000
Client : The Helena May Institute

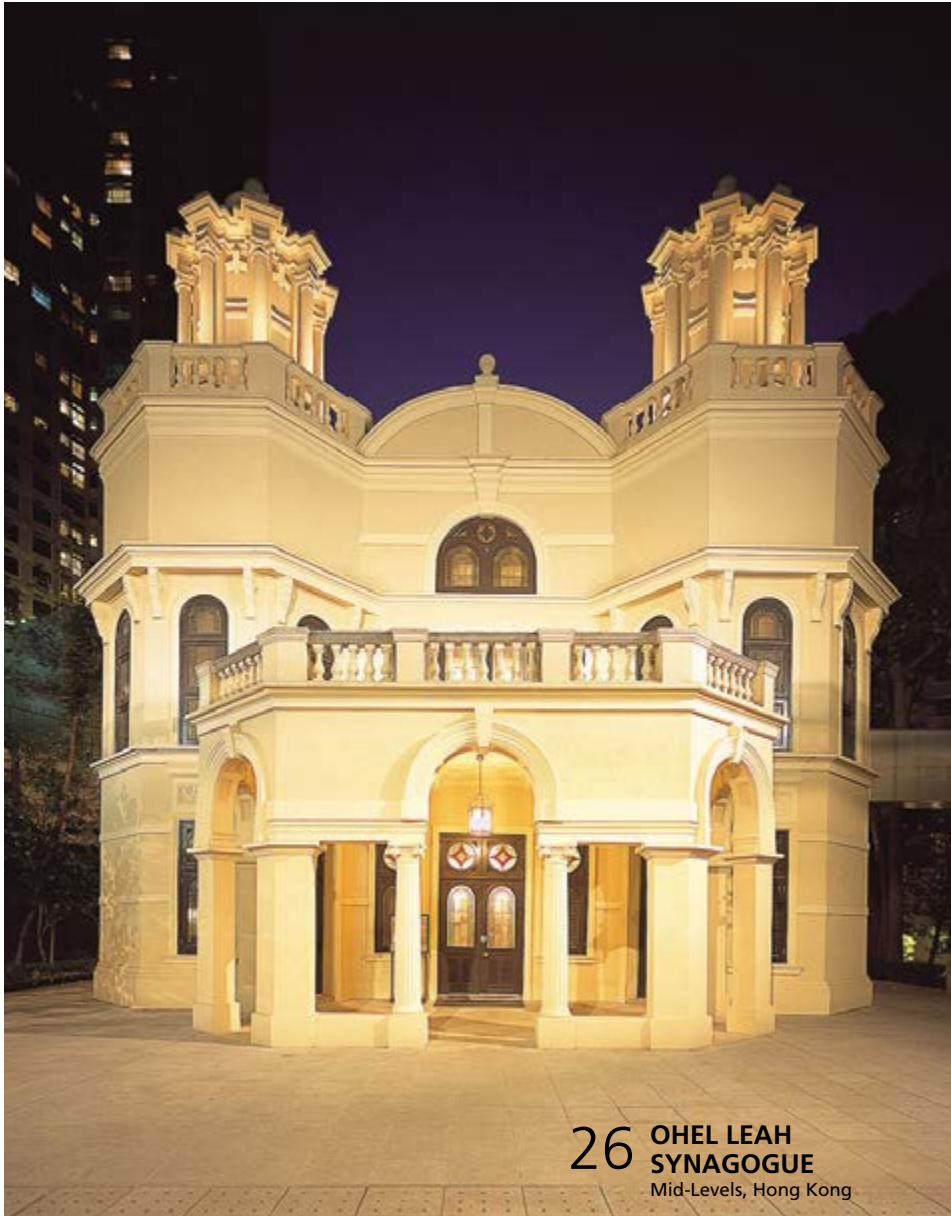


25 THE FRENCH MISSION BUILDING

Central, Hong Kong

The three-storey - plus-basement building of granite and red brick was rebuilt in 1917 in neoclassical style. The building was restored by the Hong Kong Government in 1987 and converted to the Court of Final Appeal. It is now a graded historic building.

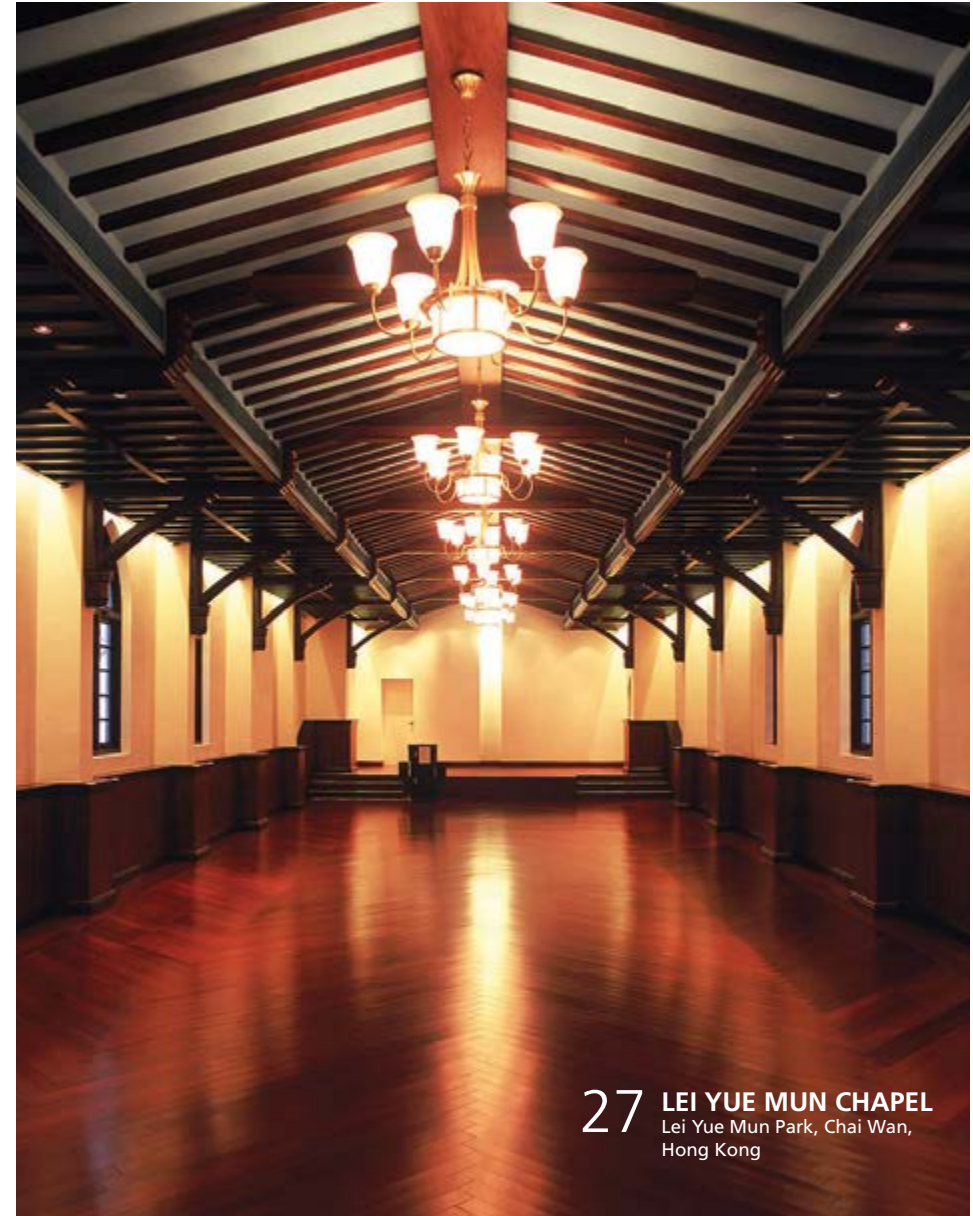
Completion : 1917
Client : The French Mission



26 **OHEL LEAH
SYNAGOGUE**
Mid-Levels, Hong Kong

The Ohel Leah Synagogue was the first synagogue in Hong Kong built in 1901. The two-storey building is an exquisite specimen of Colonial Sephardic architecture, nestled somewhat quaintly amid the soaring high-rises of steel and glass perched in the Mid-Levels of Hong Kong Island. The historic synagogue is now a Grade I historic building.

Completion : 1901



27 **LEI YUE MUN CHAPEL**
Lei Yue Mun Park, Chai Wan,
Hong Kong

Modelled on early 20th century European architecture, the Assembly Hall at Lei Yue Mun Park is a graded historical building that once served as a chapel for the British military barracks. L&O was the commissioned architect for the renovation and upgrade of the external elements of the structure, as well as the upgrade of the building services.

Completion : 2004
Client : Architectural Services
Department



28 STRAND HOTEL

Yangon, Myanmar

The Strand Hotel, originally built in 1901, received its most dramatic renovations in the early 1990s when L&O revived the building to its earlier classical splendour. This five-star hotel has 32 rooms and provides restaurants, conference facilities and a ballroom. It is recognised as a national landmark.

Completion : 1993
Client : Myanmar Hotels International

(This project is a collaboration work between L&O and Cowperthwaite & Partners).

Principal Directors



Ivy Lee *Managing Director*

Ivy joined L&O in 1998 with a First-class Honours degree in Architecture from the Chinese University of Hong Kong, she became a Partner in 2009 and is now Managing Director, overseeing all of L&O's business development and operations in Hong Kong, China, SE Asia and the Middle East. Ivy is committed to the preservation of L&O's core values reflecting its long history of almost 150 years and to the reinterpretation of these values that continue to maintain the uniqueness of L&O and with the humanity, integrity and innovation that sustains it.

Ivy supports the wider design community with her passion for design, and is expressed through her pro bono activities: she is the Director of the Hong Kong BEAM Society and Director of the Hong Kong Green Building Council which spearhead innovation in sustainability.

Ivy remains deeply involved in L&O's projects and in the design processes and technical solutions that have resulted in winning international design awards. These include the Hong Kong Science Park Phase 2, City of Dreams, Macau and Studio City Macau. In addition Ivy is currently leading an international technical consultant team to advise the Hong Kong Government on the development of a multi-purpose Sports Park, including a 50,000 seat stadium, in Kai Tak, Hong Kong.

Ivy maintains a worldwide perspective through her direct engagement and collaboration with internationally respected architects and experts whilst simultaneously nurturing diverse local talents and a multi-cultural studio approach to projects within L&O.

Alan Li *Principal Director*

Alan graduated from Bartlett School of Architecture in London and joined Leigh & Orange in 1992 till 2007, rejoined L&O in 2011 and became a Principal Director since 2017. Alan as an architect with over 30 years of management and project development experience, his expertise spans the public and private sectors - covering healthcare, hospitality, institutional, sports park, science park, railway and transportation developments. Alan's commitment to quality works of architectural and engineering design has brought him an extensive track record in delivering highly-complex and multi-disciplinary projects from design to completion of construction with high quality. At L&O, Alan has focused on large scale and multidisciplinary projects such as the Hong Kong Science Park Phase 2 Development, Macau Studio City Development, United Christian Hospital, Kai Sai Chau Public Golf Course and Kai Tak Sports Park.

Kelvin Li *Principal Director*

Joined L&O in 2004, Kelvin becomes Principal Director in 2019. Kelvin is an emerging architect and urbanist with a vision and responsibility to shape a better built environment. Graduated with distinction from the University of Hong Kong in 2000, he has thus accumulated over 20 years of practical experience, primarily in the design and construction of comprehensive development projects in both Hong Kong and Greater China.

Back in 2006, Kelvin won the Chevening Scholarship and went on to complete a higher degree at the Bartlett School of Architecture, UCL. In a personal capacity, he was invited to act as a part-time lecturer at the University of Hong Kong in 2007-2008.

Kelvin has led design teams to accomplish a multitude of large-scale, strategically complex projects of all types, including masterplanning, commercial, mixed-use, education, residential and transit-oriented developments. Many of these have won international awards, such as HKIA Annual Awards, HKIA Cross-Strait Architectural Design Awards, World Architecture Festival Awards, A' Design Awards, A&D China Awards and MIPIM Asia Awards.

Steven Humphrey *Principal Director*

Steven Humphrey is a chartered quantity surveyor with over 30 years of global commercial and project management experience covering the complete spectrum of building and civil engineering projects. He has lived and worked in the UK, Qatar, Bahrain and Hong Kong. Steven has previously worked with a renowned international construction consultancy firm for over 25 years, including leading their business in Qatar, during his career he has had the opportunity to perform a number of roles outside traditional commercial and project management, these include international research, sustainability evaluations and management consulting. More recently Steven has been involved in the project management of a number of major sporting and equine developments around the Middle East and Asia.

Steven's focus will be on supporting L&O's growing business in the Middle East and South East Asia, in order to take advantage of the current market opportunities.



HSBC Building Tseung Kwan O, Hong Kong

HEAD OFFICE (Hong Kong)

Leigh & Orange Ltd.
26/F, K11 Atelier King's Road,
728 King's Road, Quarry Bay,
Hong Kong
Tel : (852) 2899 9000
Fax : (852) 2806 0343
Email : info@leighorange.com
Website : www.leighorange.com

Shanghai

Leigh & Orange (Beijing) Ltd.
Shanghai Branch Office
Room 26108, 26/F, Infinitus Tower,
No.168 Hubin Road, Huangpu District,
Shanghai, China
Post Code : 201100
Tel : (86 21) 5187 5659
Fax : (86 21) 3366 5088
Email : shanghai@leighorange.com

Doha

Leigh & Orange Qatar LLC
Office 231, Regus Building,
2nd Floor, D-Ring Road,
P.O.Box 14649, Doha, Qatar
Tel : (974) 4423 1166
Fax : (974) 4423 1100
Email : me@leighorange.com

Shenzhen

Leigh & Orange (Shenzhen) Ltd.
Rm 2103 & 2104, Building 8,
Qianhai Excellence Financial Center (Phase I),
Unit 2, Guiwan District, Nanshan Street,
Qianhai, Shenzhen, China
Postcode 518000
Tel : (86 755) 3299 2300
Fax : (86 755) 3299 2355
Email : shenzhen@leighorange.com

Fuzhou

L&O (Fujian) Design Consultants Ltd.
10/F, Phase A, CRLAND Center,
Hongshanyuan Road, Gulou District,
Fuzhou, Fujian, China
Post Code : 350001
Tel : (86 591) 8767 5260
Fax : (86 591) 8767 5619
Email : fuzhou@leighorange.com

Beijing

Leigh & Orange (Beijing) Ltd.
Room 707A, 7/F Office Tower B,
De Run Building, 3 Yongan Dongli Jia,
Chaoyang District, Beijing China
Post Code: 100022
Tel : (86 10) 6708 1303
Fax : (86 10) 6708 1310
Email : beijing@leighorange.com

Macau

Leigh and Orange Macau Limited
Level 20, AIA Tower, Nos. 251A-301
Avenida Comercial De Macau, Macau
Tel : (853) 8294 6083
Fax : (852) 2806 0343
Email : info@leighorange.com

Please contact the Hong Kong office for enquiries.